

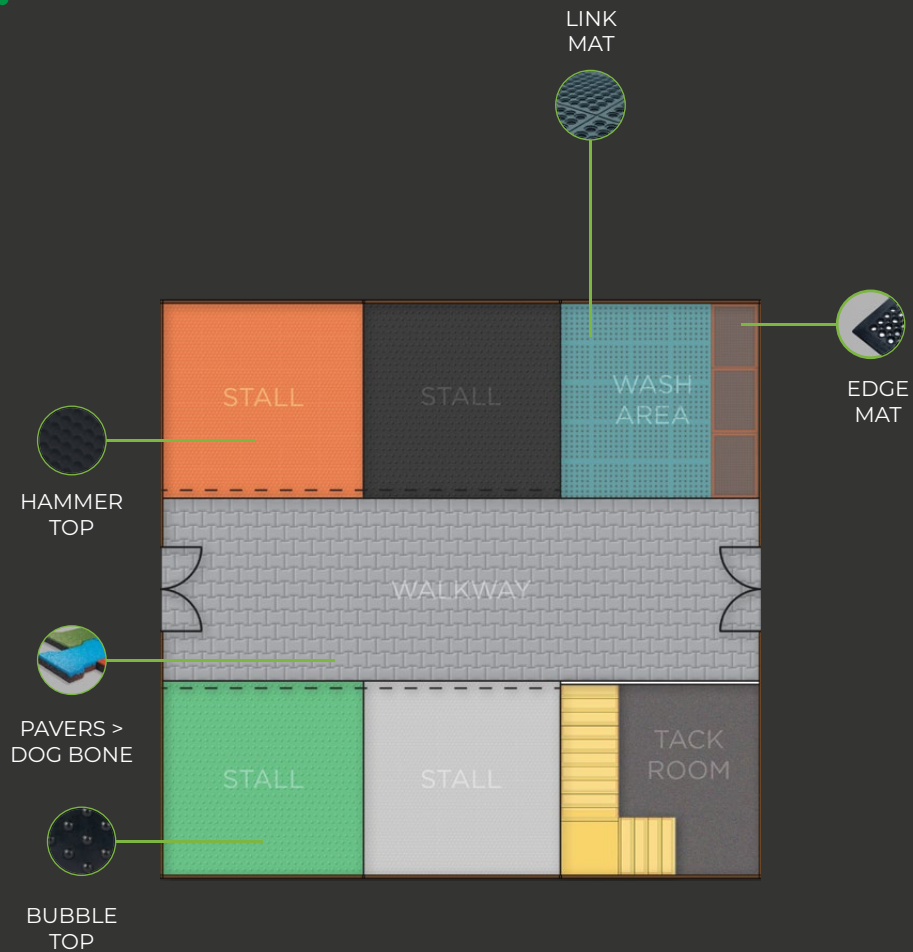


TERRA[^]TUF[®]

Robust
Solutions *by* **TERRAIN.**

BUILT TO LAST
IN ANIMAL & AGRI FARMS

TERRATOP



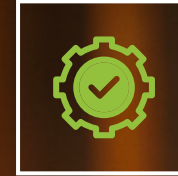
WHAT MAKES OUR PRODUCTS GREAT?



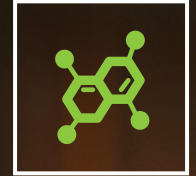
PREMIUM
SERVICE



RAW MATERIALS
FROM REPUTED
EUROPEAN
SUPPLIERS



EASY TO
INSTALL



HIGH CHEMICAL
RESISTANCE

PRODUCTS



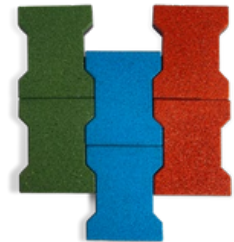
TERRATUF®
**BUBBLE
TOP**



TERRATUF®
**HAMMER
TOP**



TERRATUF®
**STABLE
GRIP**



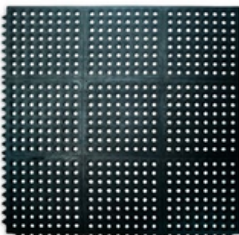
TERRATUF®
**PAVERS>
DOG BONE**



TERRATUF®
**PAVERS>
HEXAGON**



TERRATUF®
EDGE MAT



TERRATUF®
LINK MAT



TERRATUF®
INTERLOCK



TERRATUF® | BUBBLE TOP



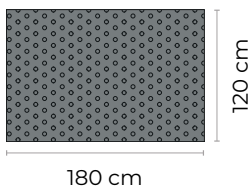
PRODUCT DESCRIPTION

Designed for stables, farms and animal enclosures, these mats are durable, non-slippery and anti-fatigue. They provide superior comfort & safety for animals, and are easy to maintain while offering excellent thermal insulation.

TECHNICAL DETAILS



SPECIFICATIONS

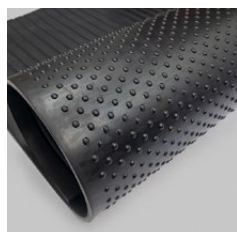


THICKNESS (mm)
10, 14, 17, 20

COLORS

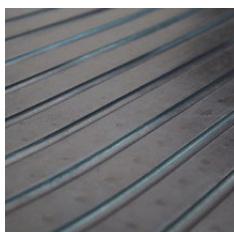


ROLLED UP



Increases animal's blood circulation

REVERSE



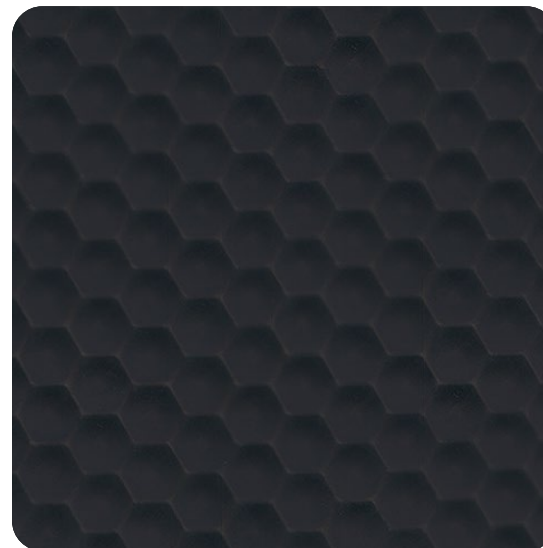
Easy drainage and slip resistance

CLOSE-UP



Reduces need for extra cushioning

TERRATUF® | HAMMER TOP



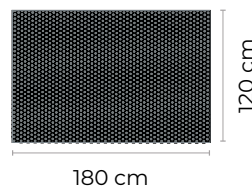
PRODUCT DESCRIPTION

Designed for stables, farms and animal enclosures, these mats are durable, non-slippery and anti-fatigue. They provide superior comfort & safety for animals, and are easy to maintain while offering excellent thermal insulation.

TECHNICAL DETAILS



SPECIFICATIONS



THICKNESS (mm)
10, 14, 17, 20

COLORS

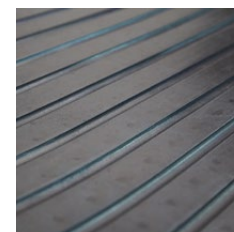


SIDE



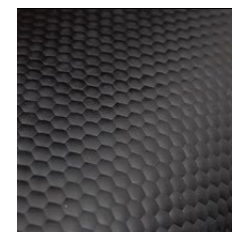
Reduces need for extra cushioning

REVERSE



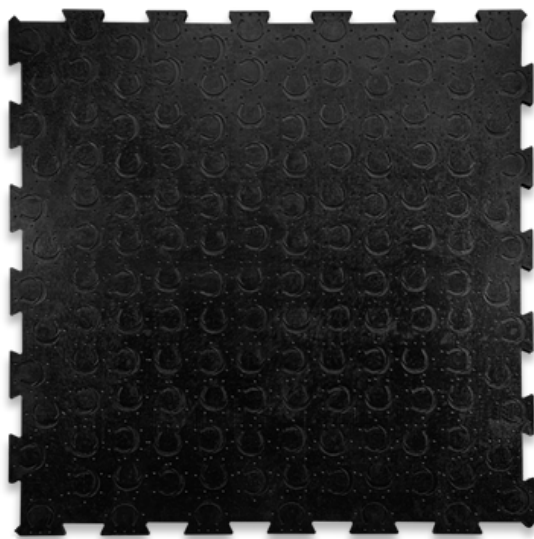
Easy drainage and slip resistance

CLOSE-UP



Provides additional comfort

TERRATUF® | STABLE GRIP



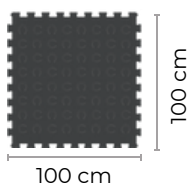
PRODUCT DESCRIPTION

A strong rubber mat with a soft, shock-absorbing surface that's comfortable for horses to stand, lie down, and move naturally on. The grooves underneath help drain water and keep the area dry and clean. Thanks to its interlocking design, each mat fits together tightly

TECHNICAL DETAILS



SPECIFICATIONS



THICKNESS (mm)
10, 14, 17, 20

COLORS



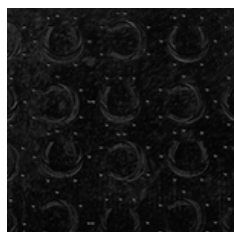
EDGE



Interlocking sides for easy installation

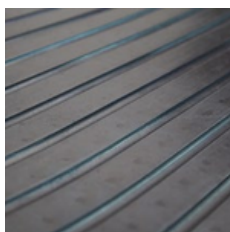
8

CLOSE-UP

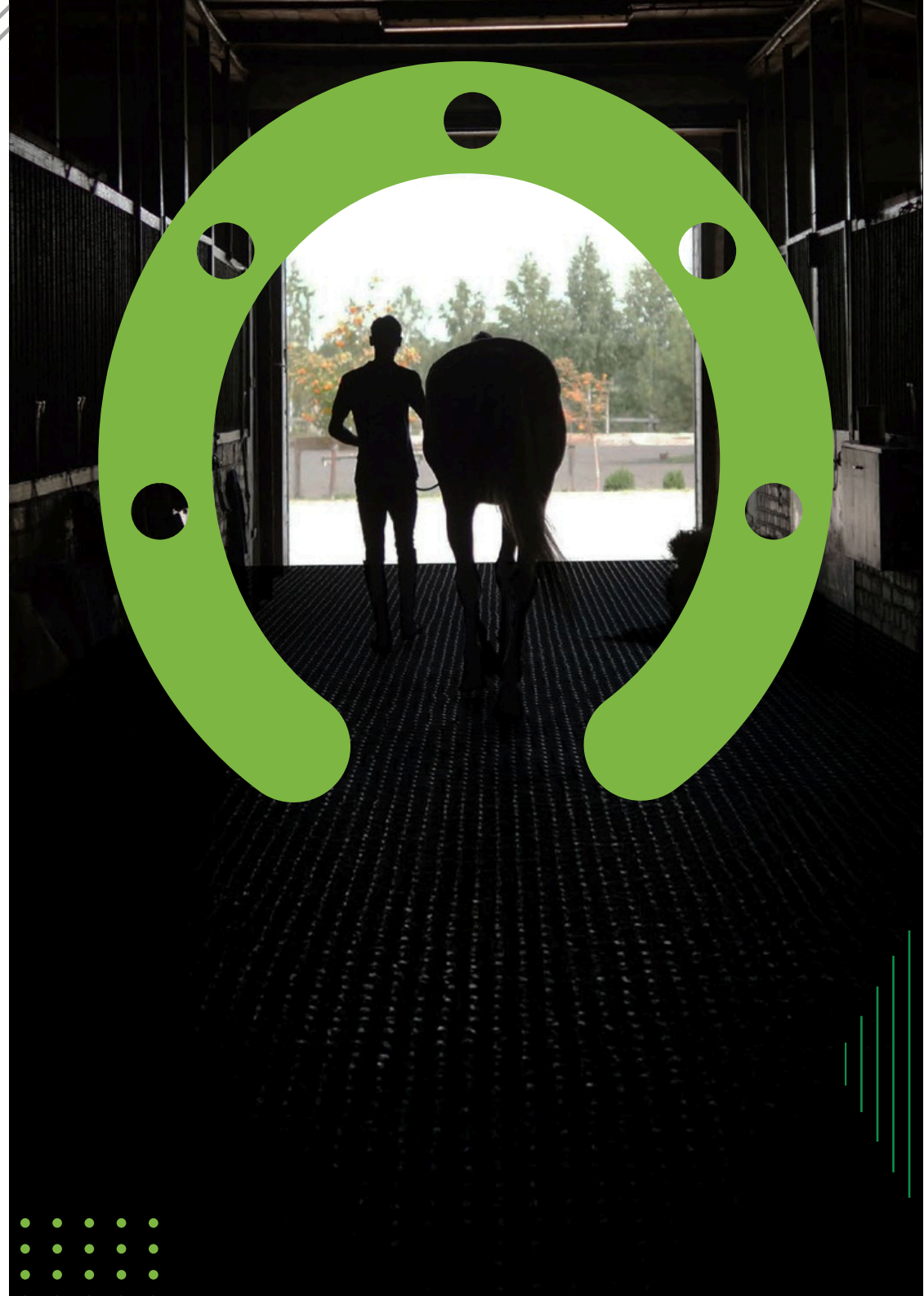
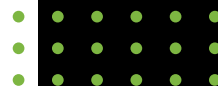


Unique hoof-shaped patterning

REVERSE



Easy drainage and slip resistance



TERRATUF® | PAVERS > DOG BONE



PRODUCT DESCRIPTION

Ideal for gardens, animal walkways, farms, stables and more, these pavers are denser than regular tiles and perfect for high-traffic areas. Their small size makes them easy to carry, handle and install.

TECHNICAL DETAILS



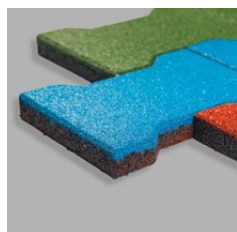
SPECIFICATIONS

SIZE (cm)	THICKNESS (mm)
16 x 20	20, 25, 30, 35, 40, 45, 50, 60

COLORS



EDGE



Easy to carry and install

REVERSE



Made with high quality materials

CORNER



Densely packed for durability

TERRATUF® | PAVERS > HEXAGON



PRODUCT DESCRIPTION

Our hexagon pavers are perfect for gardens, animal walkways, farms, and stables. They are a durable and visually appealing alternative to concrete pathways, offering versatility and practicality.

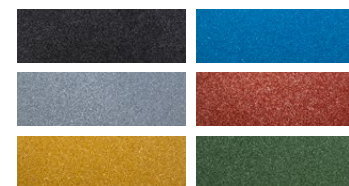
TECHNICAL DETAILS



SPECIFICATIONS

SIZE (mm)	THICKNESS (mm)
230 x 230	25, 30, 40, 45, 50

COLORS



EDGE



Densely packed for durability

REVERSE



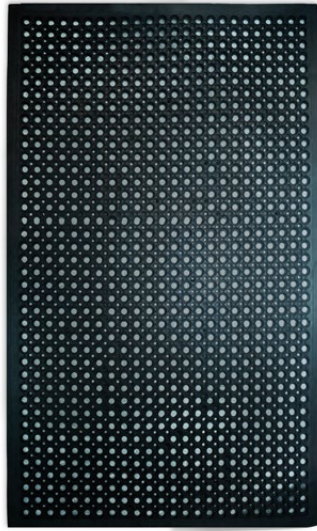
Made with high quality materials

SIDE



Easy to carry and install

TERRATUF® | **EDGE MAT**



PRODUCT DESCRIPTION

Ideal for farms, stables, and animal walkways, these mats are similar to hollow mats but with lowered edges to prevent hazardous falls. They are also flexible, durable, and provide exceptional comfort in animal-friendly environments.

TECHNICAL DETAILS



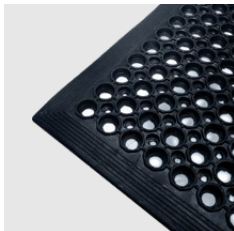
SPECIFICATIONS

SIZE (cm) 150 x 90
THICKNESS (mm) 13

COLORS



EDGE



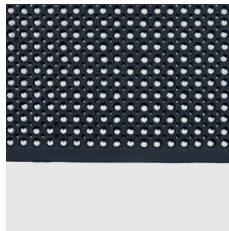
Edges for added safety

REVERSE



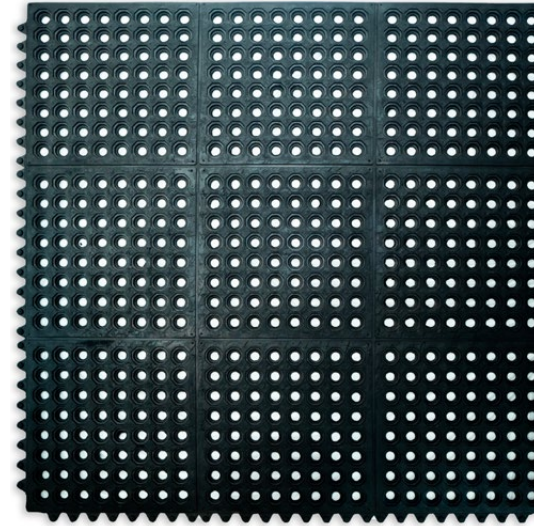
Extremely flexible and easy to install

SIDE



Anti-slip surface to extra grip

TERRATUF® | **LINK MAT**



PRODUCT DESCRIPTION

Recommended for farms, stables, animal walkways, shop floors, kitchens, and industrial areas. These tiles are easy to install and maintain, making them a durable solution for various high-traffic and demanding environments.

TECHNICAL DETAILS



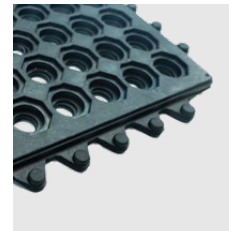
SPECIFICATIONS

SIZE (mm) 90 x 90
THICKNESS (mm) 14

COLORS

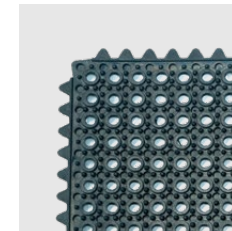


EDGE



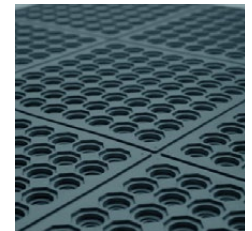
High quality vulcanised rubber

REVERSE



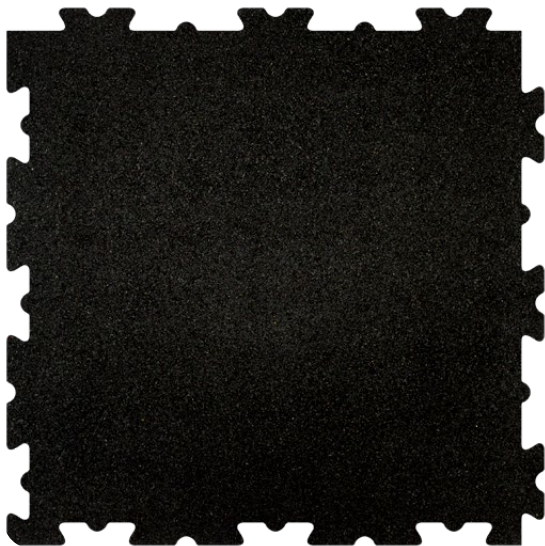
Anti-slip base for added grip

LINKING



Linking system for extra versatility

TERRATUF® | INTERLOCK



PRODUCT DESCRIPTION

These are by far the simplest and most easy to use tiles. They can be easily installed, removed and reinstalled at any other location even by an unskilled artisan.

TECHNICAL DETAILS



SPECIFICATIONS

SIZE (cm)

100 x 100
50 x 50

THICKNESS (mm)

10 - 30

COLORS

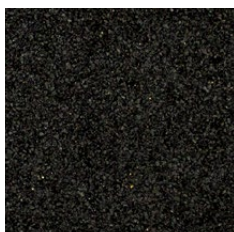


EDGE



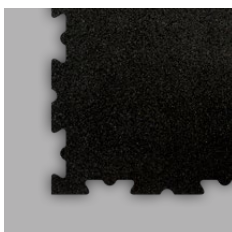
Interlocking sides for easy installation

REVERSE



Made with high quality materials

SIDE



Customisable for different uses

CERTIFIED FOR EXCELLENCE



INTERNATIONAL
STANDARDS OF
EXCELLENCE



FIRE RETARDANT
certified by
intertek
Total Quality. Assured.



ANTI-UV
certified by
intertek
Total Quality. Assured.



ANTI-FUNGAL
certified by
intertek
Total Quality. Assured.



SURFACING SAFETY
certified by
LABOSPORT



SLIP RESISTANCE
certified by
القطيعة
Al-Futtaim **اليمنت**
element



TERRATUF® BUBBLE TOP
certified for
Deformability/Elasticity, Permanent Tread Load, Abrasion, Slip
Resistance, Acid Resistance



1,200,000 SQ M/YR
RECYCLED TIRES
PRODUCED



6,000,000 KG/YR
RUBBER GRANULES
RECYCLED



200,000 TIRES
RECYCLED EVERY
YEAR



24,000 SQ M
LARGE FACTORY
AREA



150+ PEOPLE
SKILLED
WORKFORCE



3 - 70 MM
FLEXIBILITY IN
THICKNES



ECO-EXCELLENCE
WIDE VARIETY IN
TILES

ABOUT **TERRAIN®**

Terrain® Floorings is a global manufacturer, supplier and installer of made-to-order rubber flooring solutions.

Established in 1994, Terrain® Floorings is an ISO 9001 certified manufacturer and installer of resilient rubber flooring solutions that deliver well-being and performance to our users. All Terrain® products are made to international specifications in our state-of-the-art facility in the UAE using raw materials from reputed European suppliers. Our commitment to quality and proven track record has made us the partner of choice for architects, engineers, interior designers and flooring system providers across the GCC (United Arab Emirates, Saudi Arabia, Qatar, Bahrain, Kuwait and Oman) and beyond.



COMMITTED TO **SUSTAINABILITY**

Protecting the environment through rubber recycling is one of our key focus areas. Over the past 27 years, Terrain® has used over 150,000 tons of recycled rubber to create high quality flooring for sports arenas, playgrounds, gyms and more.

- /// We contribute to waste reduction and sustainability by using rubber which would otherwise go to landfills and dumps
- /// We source material from reputed European suppliers who are also committed to a green future.
- /// We are constantly innovating and developing new techniques which help lower our carbon footprint.

OUR **VISION**

Be the world's resilient flooring expert for well-being and performance.

OUR **MISSION**

Make products that match international standards, offer them at fair price and delight with sharp delivery.

- Certified in engineering and design of products, processes, and systems.
- Fair price is a selling price that considers quality, performance, supply conditions, time of delivery and payment options. It is calculated at the level that is fair for both sides. The seller gains some margin, which is not excessively high.
- Ensuring Customer Success through a proactive and holistic approach.
- Sharp on Time, Sharp in finish

TURNKEY SOLUTIONS BY **TERRAIN®**



PRODUCT SPECIFICATIONS

Our experts will analyse the area and recommend the appropriate flooring for your needs.



MANUFACTURING & DELIVERY

All Terrain® products are manufactured at our state-of-the-art facility in UAE, ensuring on time delivery.



DESIGN

Our team will show schematics of our new facility before work starts so that you know what the output will be.



PROJECT MANAGEMENT

We will be in constant communication with your project management team to ensure there are no surprises.



INSTALLATION

Terrain flooring experts will take care of the installation. No fuss, no headaches. *Available only in UAE.*




SUPPORT & MAINTENANCE


We will be happy to help your maintenance team take proper care of your new flooring.


Version: July 2025

TERRA[^]TOF[®]

**Robust
Solutions** *by* **TERRAIN.**

 inquiry@terrainfloorings.com

 terrainfloorings.com

 +971 55 325 2253

 **Al Khaleej Polymers Rubber & Plastic Industries LLC**
Plot No. L7 & 28, Al Ghail Industrial Park,
Ras al Khaimah, **UAE**

FOLLOW US ON

