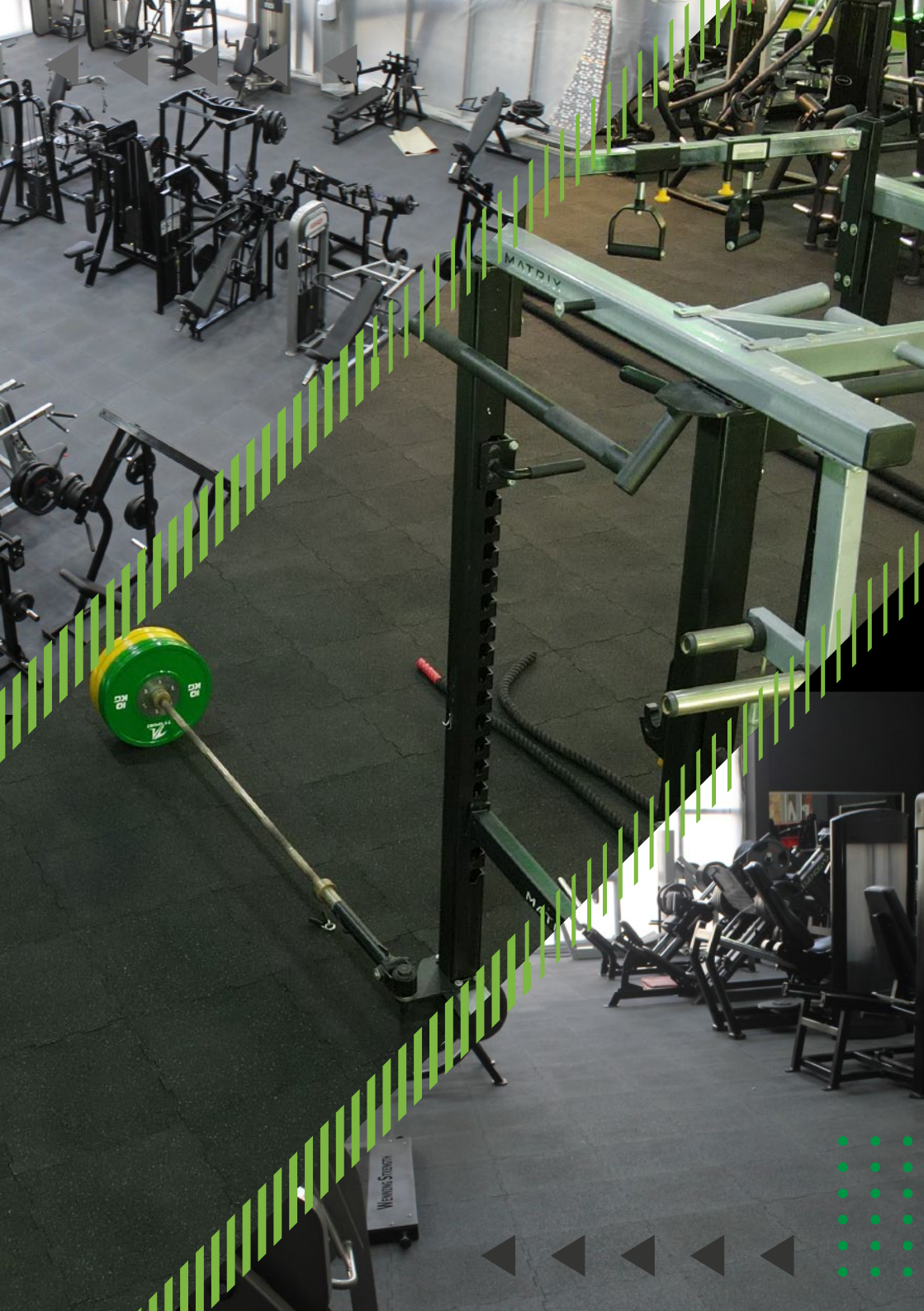




TERRAFIT®

Fitness
Solutions by **TERRAIN**®

BUILT TO PERFORM
IN GYMS & FITNESS CENTERS



TERRAFIT®



DUO
SQUARE



EXTREME



SLED
TRACK



INTERLOCK



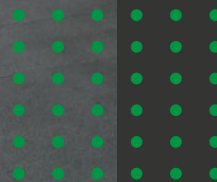
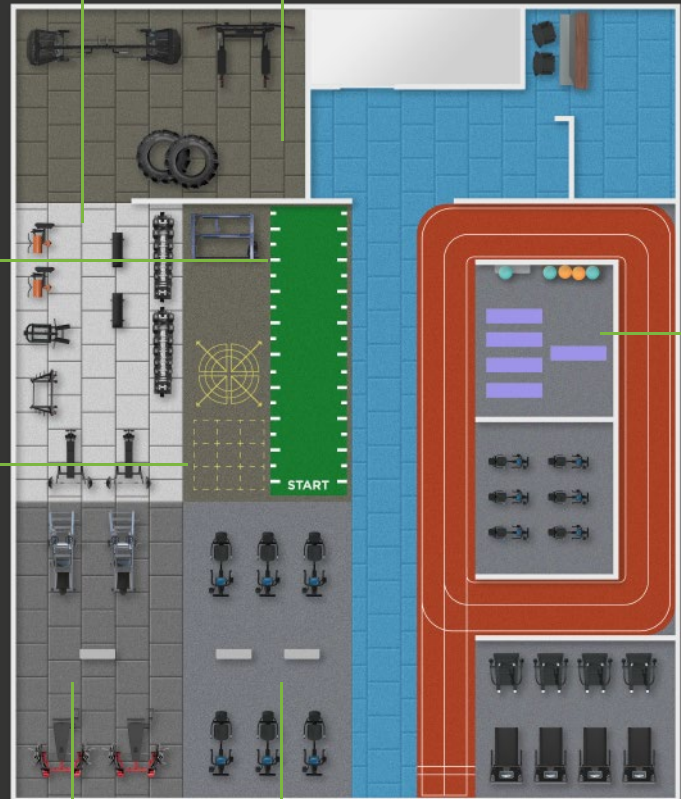
ACTIVE
ROLLS



SQUARE



INFINITY





WHAT MAKES OUR PRODUCTS GREAT?



PREMIUM
SERVICE



RAW MATERIALS
FROM REPUTED
EUROPEAN
SUPPLIERS



EASY TO
INSTALL



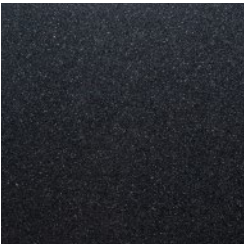
HIC
TESTED



PRODUCTS



TERRAFIT®
INTERLOCK



TERRAFIT®
SQUARE



TERRAFIT®
DUO
SQUARE



TERRAFIT®
INFINITY



TERRAFIT®
EXTREME



TERRAFIT®
TURF FIT



TERRAFIT®
SLED
TRACK



TERRAFIT®
ACTIVE
ROLLS



TERRAFIT®
PERFORMANCE
ROLLS



TERRAFIT®
PUZZLE



TERRAFIT®
PUZZLE
PERFORMANCE

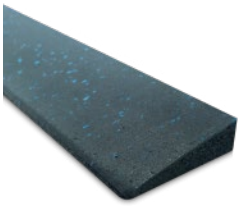


TERRAFIT®
BALLISTIC

ACCESSORIES



CRUMB EDGES



DUO EDGES



EXTREME EDGES



EXTREME CORNER



GLASS PROTECTOR

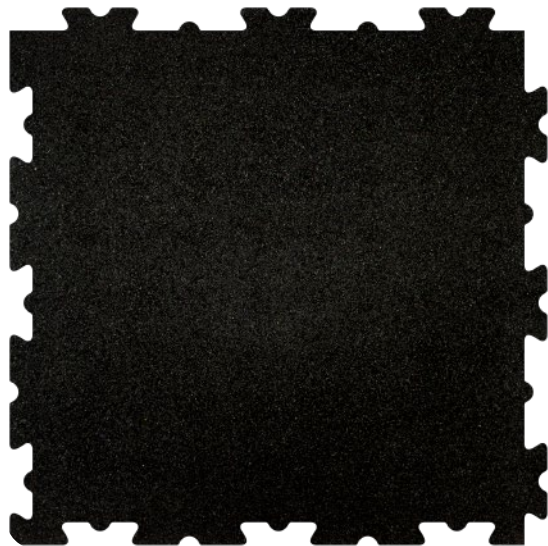


SKIRTING



EXPLORE
TERRAFIT®
ON OUR
WEBSITE

TERRAFIT® | INTERLOCK



PRODUCT DESCRIPTION

These are by far the simplest and most easy to use tiles. They can be easily installed, removed and reinstalled at any other location even by an unskilled artisan.

TECHNICAL DETAILS



SPECIFICATIONS

SIZE (cm)
100 x 100
50 x 50

THICKNESS (mm)
10 - 30

COLORS

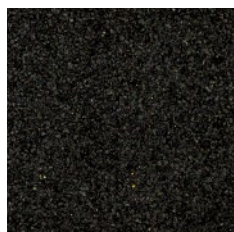


EDGE



Interlocking sides for easy installation

REVERSE



Made with high quality materials

SIDE



Customisable for different uses

TERRAFIT® | SQUARE



PRODUCT DESCRIPTION

These are simple square tiles which can be laid in any desirable pattern, and can be glued to a concrete floor for better adhesion. Tiles above 20 mm have plastic pins to keep them in place.

TECHNICAL DETAILS

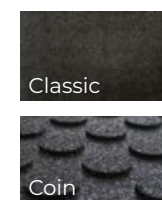


SPECIFICATIONS

SIZE (cm)
100 x 100
50 x 50

THICKNESS (mm)
10 - 50

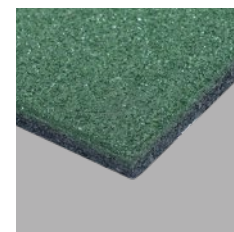
BASE VARIATIONS



COLORS



EDGE



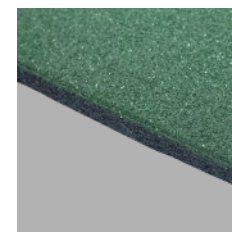
Available in a variety of colors

REVERSE



Made with high quality materials

SIDE



Pins available in thicker variants

TERRAFIT® | DUO SQUARE



PRODUCT DESCRIPTION

An amalgamation of tile and mat, Duo is for those who require a smoother finish. It gives you the advantage of a great looking product with better cushioning at an economic price.

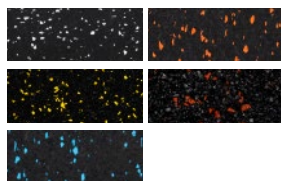
TECHNICAL DETAILS



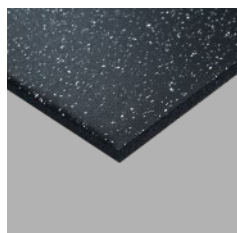
SPECIFICATIONS

SIZE (cm)	THICKNESS (mm)
100 x 100	20 - 50
50 x 50	

COLORS



EDGE



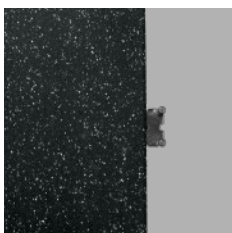
Double layered for extra smoothness

REVERSE



Made with high quality materials

SIDE



Pins available in thicker variants

TERRAFIT® | INFINITY



PRODUCT DESCRIPTION

As the name suggests, the choices are infinite. Express what you desire with unlimited colours, combined with the benefits of a 7 mm Vulcanised Rubber Tile.

TECHNICAL DETAILS



SPECIFICATIONS

SIZE (cm)	THICKNESS (mm)	SURFACE
100 x 100	7	Orange peel texture

COLORS



CLOSE-UP



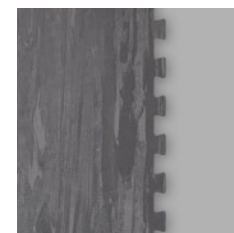
Aesthetic marbled pattern

EDGE



Made with premium vulcanised rubber

SIDE



Interlocked sides for easy installation

TERRAFIT® | EXTREME



PRODUCT DESCRIPTION

Specially made for toughness, these tiles stay solid even under extreme load. They absorb impact and noise well, and is easy to install on a variety of surfaces.

TECHNICAL DETAILS



SPECIFICATIONS

SIZE (cm)
100 x 100

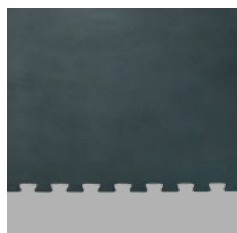
THICKNESS (mm)
15

SURFACE
Orange peel texture

COLORS

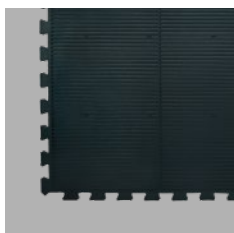


EDGE



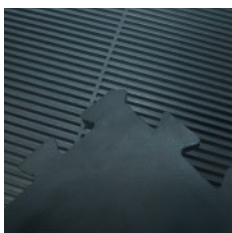
High-quality vulcanised rubber

REVERSE



Ribbed base for easy drainage

SIDE



Interlocked sides for easy installation

TERRAFIT® | TURF FIT



PRODUCT DESCRIPTION

Turf Fit is a high-performance, durable turf tile crafted for gym and sports areas. Engineered to withstand intense workouts and heavy foot traffic, it provides excellent traction and shock absorption for a safe, comfortable training surface. Ideal for fitness zones, sports fields, and high-impact activities, Turf Fit is low-maintenance, versatile, and built to endure.

TECHNICAL DETAILS



SPECIFICATIONS

SIZE (cm)
100x100,
50x50

THICKNESS (mm)
20 - 50

EDGE



Nature-like, smooth turf

REVERSE

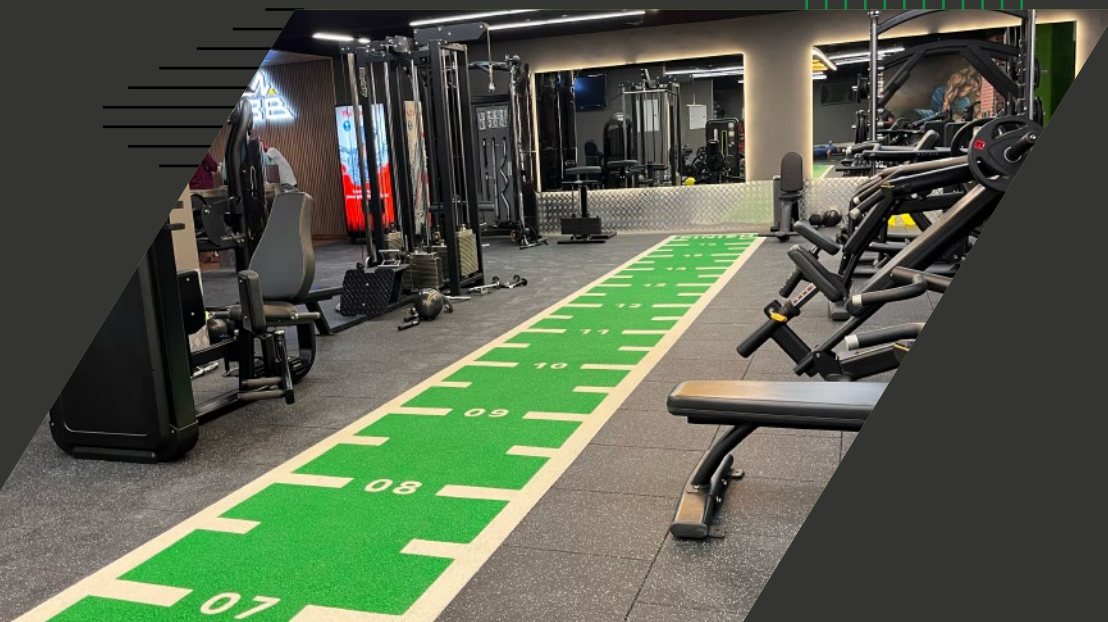


Easy to install on a variety of surfaces

PINS



Bottom pins for easy installation



TERRAFIT® | SLED TRACKS



PRODUCT DESCRIPTION

Sled Track is the perfect synthetic turf for your gym. With its strong and dense design, this turf can handle intense workouts like sprints and weight sled training. Plus, you completely personalize the look of your turf.

TECHNICAL DETAILS



SPECIFICATIONS

SIZE

1.5 x 10 m
1.5 x 12 m
1.5 x 15 m

THICKNESS (mm)

15

COLORS



TERRAFIT® | ACTIVE ROLLS



PRODUCT DESCRIPTION

Active Rolls are made from high quality SBR and EPDM granules, and are among the most versatile products in our range, finding applications across industries.

TECHNICAL DETAILS

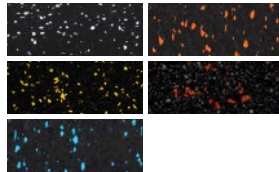


SPECIFICATIONS

SIZE
1.2 x 10 m

THICKNESS (mm)
6, 8, 10

COLORS



TERRAFIT® | PERFORMANCE ROLLS



PRODUCT DESCRIPTION

These rolls are made from high-quality EPDM granules, and are among the most versatile products in our range, finding applications across various industries.

TECHNICAL DETAILS

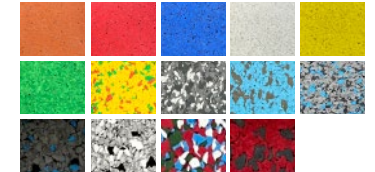


SPECIFICATIONS

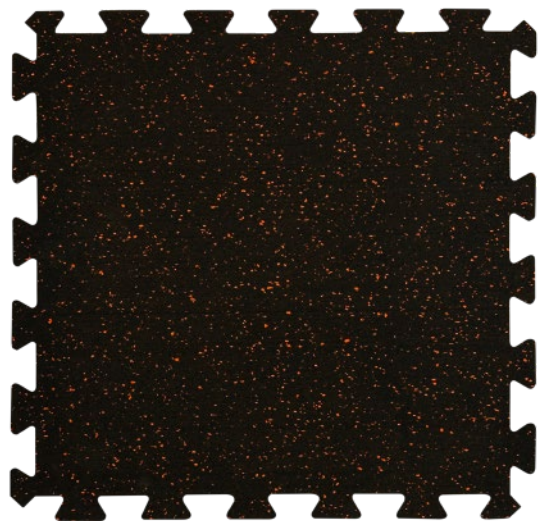
SIZE
1.2 x 10 m

THICKNESS (mm)
6, 8, 10

COLORS



TERRAFIT® | PUZZLE



SPECIFICATIONS

SIZE (mm)	THICKNESS (mm)
50 x 50	6, 8, 10

PRODUCT DESCRIPTION

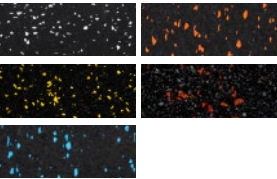
TerraFit Puzzle is designed for fitness and gym spaces. Combining the benefits of rubber tiles and rolls, it's water-resistant flooring, easy to clean and maintain.

The interlocking design ensures a secure fit, and you can easily disconnect and rearrange it. Available in various colors to unleash your creativity!

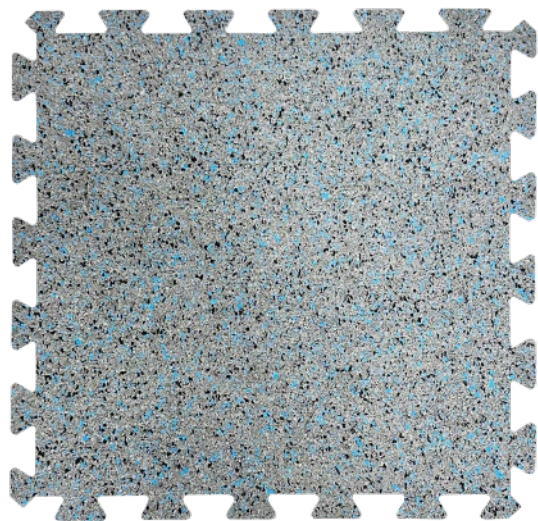
TECHNICAL DETAILS



COLORS



TERRAFIT® | PUZZLE PERFORMANCE



PRODUCT DESCRIPTION

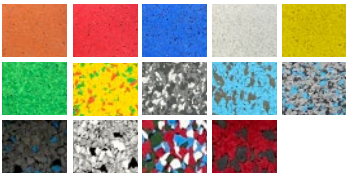
TerraFit Performance Puzzle is crafted from high-quality EPDM granules, making it ideal for fitness and gym environments. This water-resistant flooring combines the advantages of rubber tiles and rolls, ensuring easy cleaning and maintenance.

Its interlocking design provides a secure fit, allowing for simple disconnection and rearrangement. Plus, you can customize it in any colors or combinations to suit your needs!

SPECIFICATIONS

SIZE (mm)	THICKNESS (mm)
50 x 50	4, 6, 8, 10

COLORS



TECHNICAL DETAILS



TERRAFIT® | ACCESSORIES



CRUMB EDGES

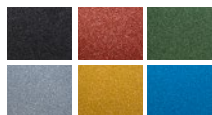
PRODUCT DESCRIPTION

Edges are designed to make the transition from a tiled floor to an adjoining surface easier and safer. They are available in a variety of colors and blend in with the flooring better.

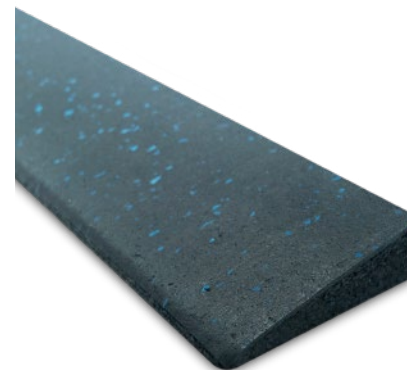
THICKNESS

2 cm - 5 cm

COLORS



TECHNICAL DETAILS



DUO EDGES

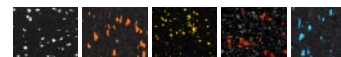
PRODUCT DESCRIPTION

Duo Edges are designed to make the transition from a tiled floor to an adjoining surface easier and safer. They are available in a variety of colors and blend in with the flooring better.

THICKNESS

2 cm - 7 cm

COLORS



TECHNICAL DETAILS



EXTREME EDGES

PRODUCT DESCRIPTION

Extreme edges are designed to make the transition from a tiled floor to an adjoining surface easier and safer. They blend in with the flooring better.

TECHNICAL DETAILS



DIMENSIONS (MM)

1000 x 100

THICKNESS

15 mm



EXTREME CORNERS

PRODUCT DESCRIPTION

Extreme Corners are designed to make the transition from a tiled floor to an adjoining surface easier and safer. Available in a variety of colors and blend in with the flooring better.

TECHNICAL DETAILS



DIMENSIONS (MM)

100 x 92



GLASS PROTECTOR (CURB STONE)

PRODUCT DESCRIPTION

Curb Stones are tough, absorb impact, and offer excellent safety in gyms. Placing them strategically can protect glass and mirrors, preventing damage in case weights accidentally roll and hit them.

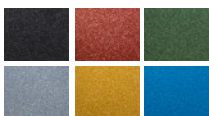
THICKNESS

10 x 50 x 15 cm

TECHNICAL DETAILS



COLORS



SKIRTING

PRODUCT DESCRIPTION

Rubber Skirting adds a finishing touch to your walls while providing effective protection. Designed to resist wear and tear, they guard against scuffs, scratches, and impacts, ensuring your walls stay looking good.

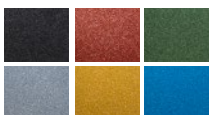
SPECIFICATIONS

HEIGHT 10 cm
THICKNESS (mm) 8 - 10

TECHNICAL DETAILS



COLORS



CERTIFIED FOR EXCELLENCE



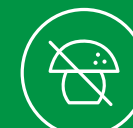
INTERNATIONAL
STANDARDS OF
EXCELLENCE



FIRE RETARDANT
certified by
intertek
Total Quality. Assured.



ANTI-UV
certified by
intertek
Total Quality. Assured.



ANTI-FUNGAL
certified by
intertek
Total Quality. Assured.



SURFACING SAFETY
certified by
LABOSPORT



SLIP RESISTANCE
certified by
المنت element
الفطيمه Al-Fatimah





1,200,000 SQ M/YR
RECYCLED TIRES
PRODUCED



6,000,000 KG/YR
RUBBER GRANULES
RECYCLED

ABOUT **TERRAIN®**

Terrain® Floorings is a global manufacturer, supplier and installer of made-to-order rubber flooring solutions.

Established in 1984, Terrain® Floorings is an ISO 9001 certified manufacturer.



COMMITTED TO **SUSTAINABILITY**

Protecting the environment through rubber recycling is one of our key focus areas. Over the past 27 years, Terrain® has used over 150,000 tons of recycled rubber to create high quality flooring for sports arenas, playgrounds, gyms and more.

- /// We contribute to waste reduction and sustainability by using rubber which would otherwise go to landfills and dumps
- /// We source material from reputed European suppliers who are also committed to a green future.
- /// We are constantly innovating and developing new techniques which help lower our carbon footprint.

OUR **VISION**

Be the world's resilient flooring expert for well-being and performance.

OUR **MISSION**

Make products that match international standards, offer them at fair price and delight with sharp delivery.

- Certified in engineering and design of products, processes, and systems.
- Fair price is a selling price that considers quality, performance, supply conditions, time of delivery and payment options. It is calculated at the level that is fair for both sides. The seller gains some margin, which is not excessively high.
- Ensuring Customer Success through a proactive and holistic approach.
- Sharp on Time, Sharp in finish

TURNKEY SOLUTIONS BY **TERRAIN®**



PRODUCT SPECIFICATIONS

Our experts will analyse the area and recommend the appropriate flooring for your needs.



MANUFACTURING & DELIVERY

All Terrain® products are manufactured at our state-of-the-art facility in UAE, ensuring on time delivery.



DESIGN

Our team will show schematics of our new facility before work starts so that you know what the output will be.



PROJECT MANAGEMENT

We will be in constant communication with your project management team to ensure there are no surprises.



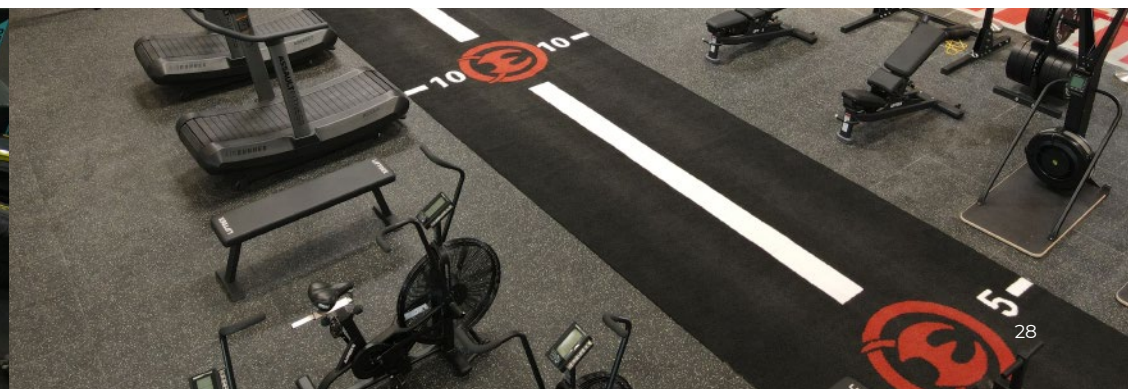
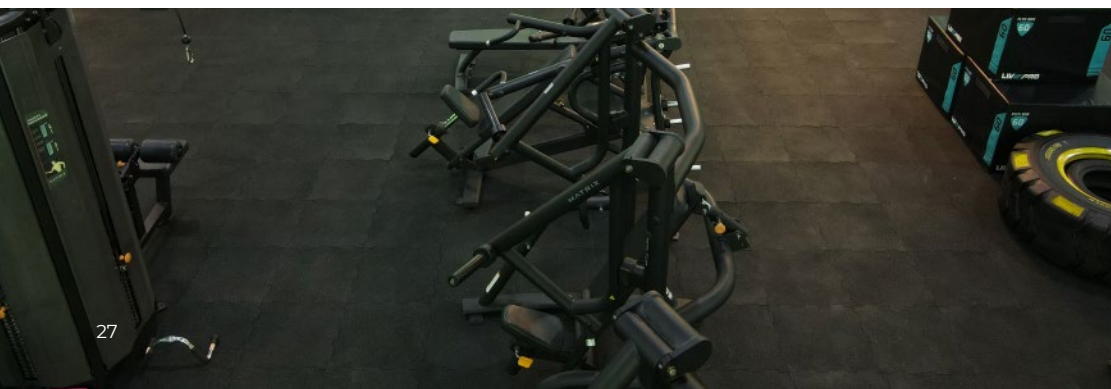
INSTALLATION

Terrain flooring experts will take care of the installation. No fuss, no headaches. Available only in UAE.



SUPPORT & MAINTENANCE

We will be happy to help your maintenance team take proper care of your new flooring.



TERRAFIT[®]

Fitness
Solutions *by* **TERRAIN.**

✉ inquiry@terrainfloorings.com

🌐 terrainfloorings.com

☎ +971 55 325 2253

📍 Al Khaleej Polymers Rubber & Plastic Industries LLC
Plot No. L7 & 28, Al Ghail Industrial Park,
Ras al Khaimah, **UAE**

FOLLOW US ON

