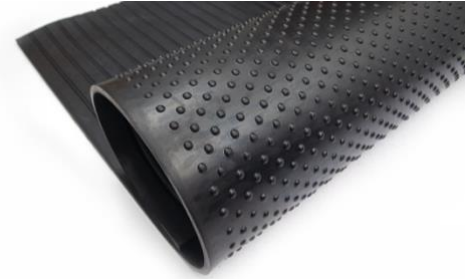


TerraTuf® – BUBBLE TOP

ABOUT

Designed as solid and rugged specifically for horse stables. These mats are solid and rugged. They provide extreme resistance to abrasion and wear and tear. The grooves at the bottom help with the drainage of any liquid leakage.



PERFORMANCE ATTRIBUTES

- Anti-fatigue & Anti-Slip.
- Fast installation.
- Easy to clean
- Thermal insulation
- Easy drainage

SPECIFICATIONS

- Size: 122x183cm
- Weight- 14mm-29kgs, 17mm – 41kgs, 20mm – 56kgs
- Standard Tolerances: Width: +/- 3mm; Length: +/- 3mm Thickness: +/-2mm

MATERIAL

- Blend of NR-SBR compound
- Available in Black and other colors upon request

TECHNICAL DATA

PROPERTY	TEST METHOD	UNITS	TEST RESULTS
Shore Hardness	ASTM D2240-97	Shore A	60±5
Specific Gravity	ASTM D792	g/cm ³	1.25±0.05
Tensile Strength	ASTM D412-98A	MPa	Min 3
Elongation at Break	ASTM D412-98A	%	Min 280
Compression Set @ 70°/ 22hrs	ASTM D395-98	%	35 Max
Abrasion Loss	ASTM D5963	mm ³	335 Max
Slip Resistance	DIN 3763	μ	>0.45
Aging Test (70°/ 22hrs) Hardness Change Tensile Strength Change Elongation @ Break Change	ASTM D573-99 ASTM D2240-97 ASTM D412-98a ASTM D 412-98a	Shore A % %	+5 Max -10 Max -25 Max
Tear Strength	ASTM D624	KN/m	15 Min
Uric Acid Ammonia Solution	DIN 3763	- -	Resistant Resistant

Working Temperature upto 70°C

Good Abrasion Resistance *The values & properties stated above are carried out in our lab for the component used in the production. However, they do not constitute a guarantee for a specific product feature & do not establish a legal contract

CERTIFICATIONS



9001:2015



E648, E492, E2179
E648, E3152-18



EN1177, EN71



DIN 3763:2022-08



CONTACT

+971 4 263 2332 | +971 55 325 2253
inquiry@terrainfloorings.com
terrainfloorings.com

