



TERRAPLAY[®]

Play
Solutions by **TERRAIN**.

BUILT FOR **COMFORT**
AND **SAFETY**



WHAT MAKES OUR PRODUCTS GREAT?



PREMIUM
SERVICE



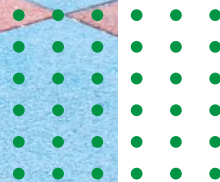
RAW MATERIALS
FROM REPUTED
EUROPEAN
SUPPLIERS



EASY TO
INSTALL

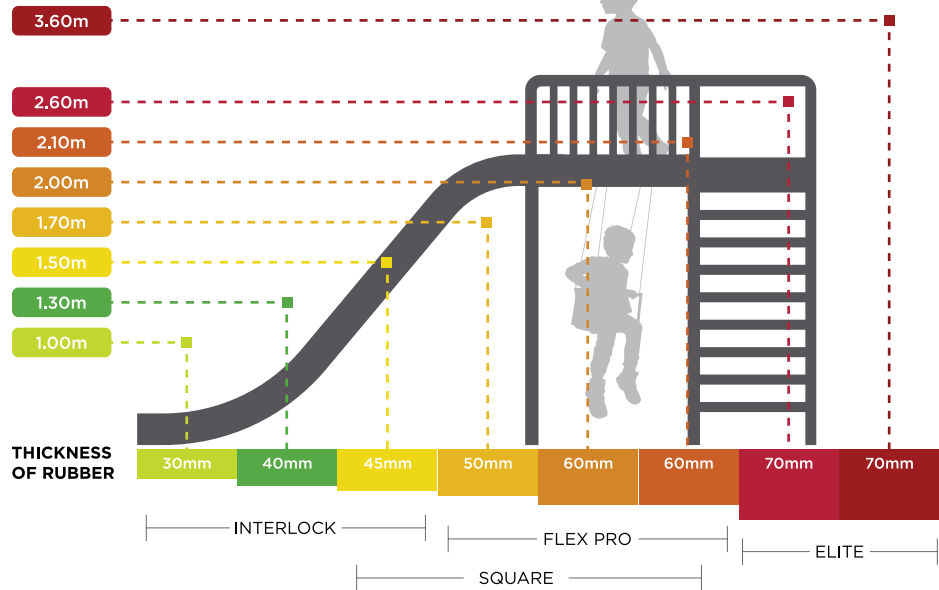


HIC
TESTED

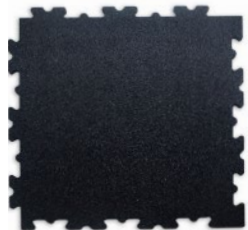


CRITICAL FALL HEIGHT

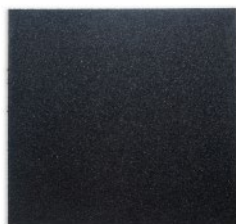
HIC:



PRODUCTS



TERRAPLAY®
INTERLOCK



TERRAPLAY®
SQUARE



TERRAPLAY®
FLEX PRO



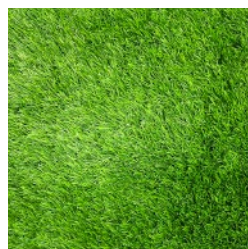
TERRAPLAY®
HOLLOW



TERRAPLAY®
HOLLOW
(NO BORDER)



TERRAPLAY®
ELITE



TERRAPLAY®
TURF PLAY



TERRAPLAY®
TURF FIT

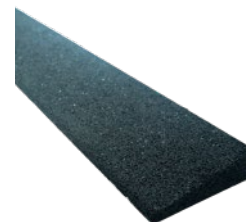


TERRAPLAY®
CORNER GUARDS



TERRAPLAY®
DOOR STOPPER

ACCESSORIES



TERRAPLAY®
CRUMB EDGES



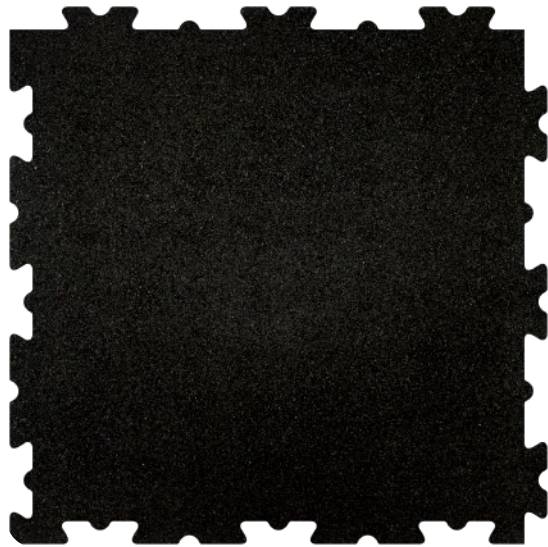
TERRAPLAY®
CURBSTONE



EXPLORE TERRAPLAY®
ON OUR WEBSITE



TERRAPLAY® | INTERLOCK



PRODUCT DESCRIPTION

These are by far the simplest and most easy to use tiles. They can be easily installed, removed and reinstalled at any other location even by an unskilled artisan.

TECHNICAL DETAILS



SPECIFICATIONS

SIZE (cm)
100 x 100
50 x 50

THICKNESS (mm)
10 - 30

COLORS

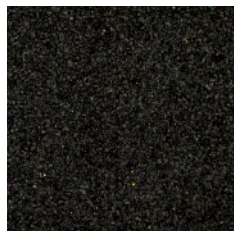


EDGE



Interlocking sides for easy installation

REVERSE



Made with high quality materials

SIDE



Customisable for different uses

TERRAPLAY® | SQUARE



PRODUCT DESCRIPTION

These are simple square tiles which can be laid in any desirable pattern, and can be glued to a concrete floor for better adhesion. Tiles above 20 mm have plastic pins to keep them in place.

TECHNICAL DETAILS

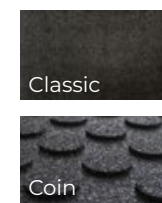


SPECIFICATIONS

SIZE (cm)
100 x 100
50 x 50

THICKNESS (mm)
10 - 50

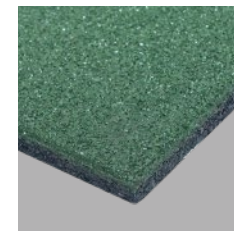
BASE VARIATIONS



COLORS

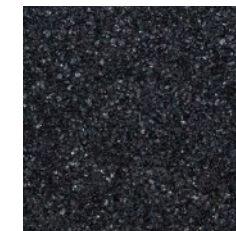


EDGE



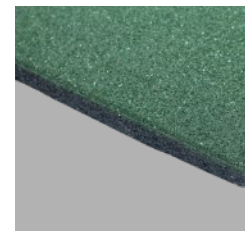
Available in a variety of colors

REVERSE



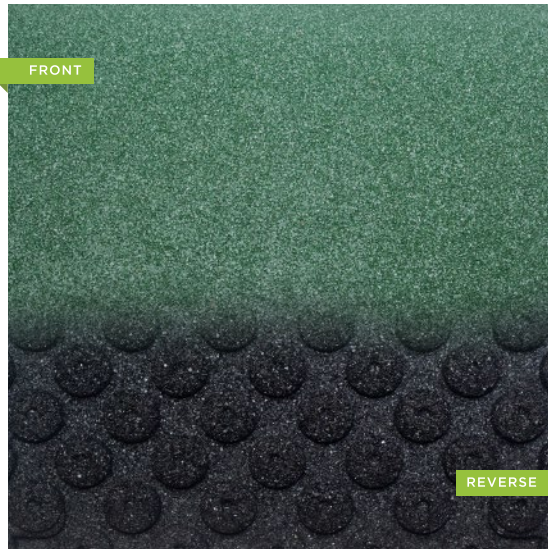
Made with high quality materials

SIDE



Pins available in thicker variants

TERRAPLAY® | FLEX PRO



PRODUCT DESCRIPTION

For better cushioning and impact resistance, we have our specially developed range of tiles which are softer on the knees and reduce impact on children, if they are to fall.

TECHNICAL DETAILS



SPECIFICATIONS

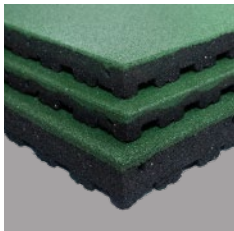
SIZE (cm)
100x100,
50x50

THICKNESS (mm)
40, 45, 50, 70

COLORS



EDGE



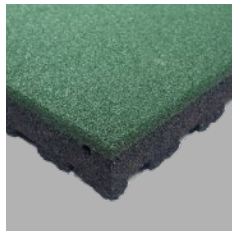
Thick tiles that absorb impact

REVERSE



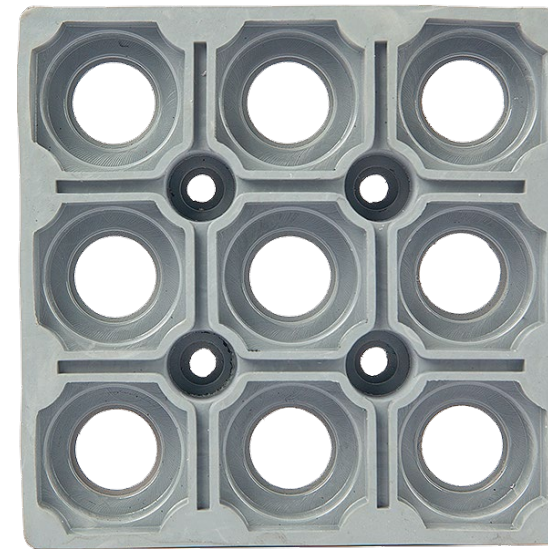
Designed with deep buttons in the base

SIDE



Pins available in thicker variants

TERRAPLAY® | HOLLOW MAT



PRODUCT DESCRIPTION

Hollow mats are extremely versatile, resistant to slippage and breakage and are flexible, durable, and easy to install. The built-in perforations help in water drainage.

TECHNICAL DETAILS



SPECIFICATIONS

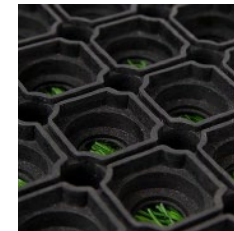
SIZE (cm)
40x60
80x120
100x100
100x150

THICKNESS (mm)
16, 22

COLORS



CLOSE UP



Densely packed for durability

REVERSE



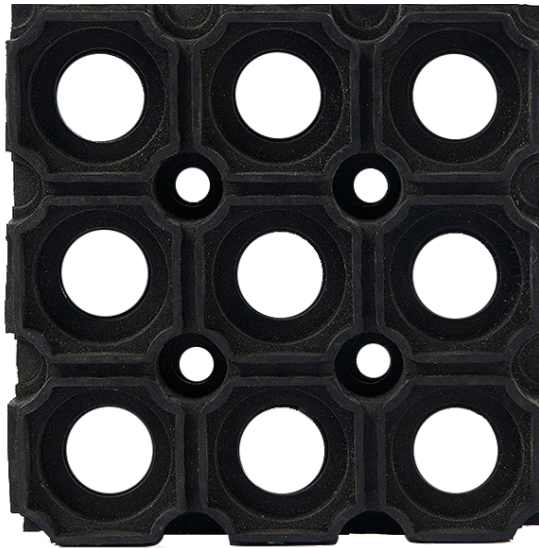
Made with high quality materials

ANTI-SLIP BASE



Easy to carry and install

TERRAPLAY® | HOLLOW MAT (NO BORDER)



PRODUCT DESCRIPTION

Hollow mats are extremely versatile, resistant to slippage and breakage and are flexible, durable, and easy to install. The built-in perforations help in water drainage.

TECHNICAL DETAILS



SPECIFICATIONS

SIZE (cm)

40x60 | 80x120
100x100 | 100x150

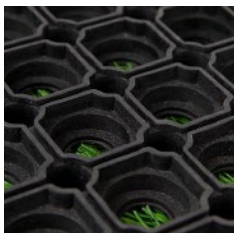
THICKNESS (mm)

16, 22

COLORS



CLOSE UP



Densely packed for durability

REVERSE



Made with high quality materials

ANTI-SLIP BASE



Easy to carry and install

TERRAPLAY® | ELITE



PRODUCT DESCRIPTION

For better cushioning and impact resistance, we have our specially developed range of tiles which are softer on the knees and reduce impact on children if they are to fall.

TECHNICAL DETAILS



SPECIFICATIONS

SIZE (cm)

50x50

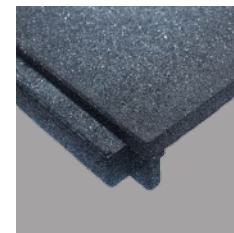
THICKNESS (mm)

40, 45, 50, 70

COLORS

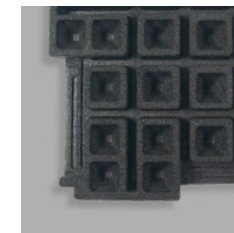


EDGE



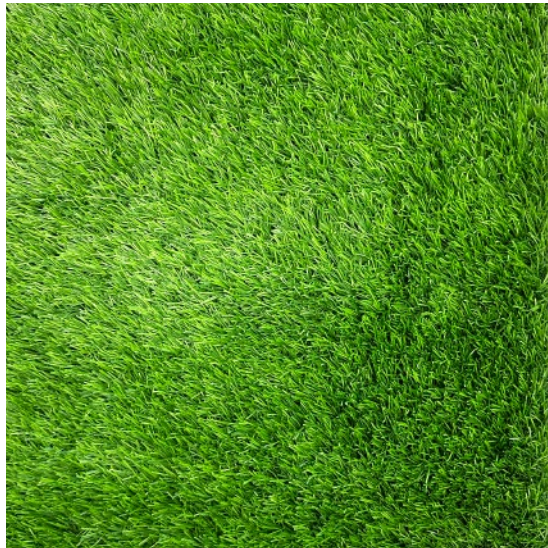
State of the art impact resistance

REVERSE



Special base for shock absorption

TERRAPLAY® | TURF PLAY



PRODUCT DESCRIPTION

Turf Play is a soft, durable, and eco-friendly artificial grass tile designed specifically for children's play areas. It provides a safe, cushioned surface for active play, mimicking natural grass while remaining low-maintenance. Ideal for creating a green, inviting play environment where kids can tumble, run, and explore with comfort and safety.

SPECIFICATIONS

SIZE (cm)

100x100,
50x50

THICKNESS (mm)

20 - 50

TECHNICAL DETAILS

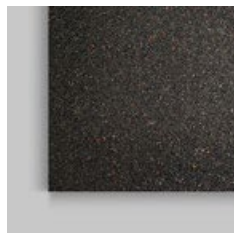


EDGE



Nature-like,
smooth turf

REVERSE



Easy to install on a
variety of surfaces

PINS



Bottom pins for
easy installation

TERRAPLAY® | TURF FIT



PRODUCT DESCRIPTION

Turf Fit is a high-performance, durable turf tile crafted for gym and sports areas. Engineered to withstand intense workouts and heavy foot traffic, it provides excellent traction and shock absorption for a safe, comfortable training surface. Ideal for fitness zones, sports fields, and high-impact activities, Turf Fit is low-maintenance, versatile, and built to endure.

SPECIFICATIONS

SIZE (cm)

100x100,
50x50

THICKNESS (mm)

20 - 50

TECHNICAL DETAILS



EDGE



Nature-like,
smooth turf

REVERSE



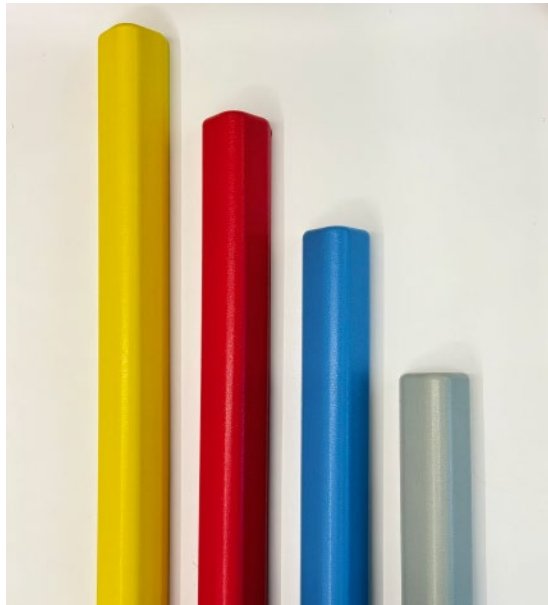
Easy to install on a
variety of surfaces

PINS



Bottom pins for
easy installation

TERRAPLAY® | CORNER GUARDS



PRODUCT DESCRIPTION

TerraPlay® Corner Guards are easy to install and made to last! Made from durable polyurethane integral foam with a closed skin, these guards offer reliable protection. Perfect for schools, daycares, care centers, play areas, and more, they're a great way to keep kids safe.

TECHNICAL DETAILS



SPECIFICATIONS

LENGTH
100 cm

THICKNESS
6 cm
5cm x 5 cm

COLORS



TERRAPLAY® | DOOR STOPPER



PRODUCT DESCRIPTION

Introducing the TerraPlay® Door Stopper: a durable and versatile solution crafted from Polyurethane. Our door stoppers are designed to effortlessly keep your doors securely open or prevent them from swinging shut with just a gentle touch. Built to withstand daily use, they provide reliable support for your doors. Available in 4 colors for your convenience.

TECHNICAL DETAILS



SPECIFICATIONS

SIZE (cm)
12x8 cm

THICKNESS (mm)
3 cm

COLORS



TERRAPLAY® | ACCESSORIES



SPECIFICATIONS

THICKNESS
2 - 5 cm

COLORS



CRUMB EDGES

PRODUCT DESCRIPTION

Edges are designed to make the transition from a tiled floor to an adjoining surface easier and safer. They are available in a variety of colors to blend in with the flooring better.

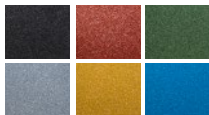
TECHNICAL DETAILS



SPECIFICATIONS

THICKNESS
10 x 50 x 15 cm

COLORS



CURBSTONE

PRODUCT DESCRIPTION

Curbstone is tough, absorb impact, and offer excellent safety and security to kids and adults in playareas.

TECHNICAL DETAILS



CERTIFIED FOR EXCELLENCE



INTERNATIONAL
STANDARDS OF
EXCELLENCE



FIRE RETARDANT
certified by
intertek
Total Quality. Assured.



ANTI-UV
certified by
intertek
Total Quality. Assured.



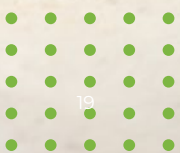
ANTI-FUNGAL
certified by
intertek
Total Quality. Assured.



SURFACING SAFETY
certified by
LABOSPORT



SLIP RESISTANCE
certified by
البيمنت **element**
الفطيمه **Al-Fatimah**





1,200,000 SQ M/YR
RECYCLED TIRES
PRODUCED



6,000,000 KG/YR
RUBBER GRANULES
RECYCLED



200,000 TIRES
RECYCLED EVERY
YEAR



24,000 SQ M
LARGE FACTORY
AREA



150+ PEOPLE
SKILLED
WORKFORCE



3 - 70 MM
FLEXIBILITY IN
THICKNES



ECO-EXCELLENCE
WIDE VARIETY IN
TILES

ABOUT **TERRAIN**[®]

Terrain[®] Floorings is a global manufacturer, supplier and installer of made-to-order rubber flooring solutions.

Established in 1994, Terrain[®] Floorings is an ISO 9001 certified manufacturer and installer of resilient rubber flooring solutions that deliver well-being and performance to our users. All Terrain[®] products are made to international specifications in our state-of-the-art facility in the UAE using raw materials from reputed European suppliers. Our commitment to quality and proven track record has made us the partner of choice for architects, engineers, interior designers and flooring system providers across the GCC (United Arab Emirates, Saudi Arabia, Qatar, Bahrain, Kuwait and Oman) and beyond.



COMMITTED TO **SUSTAINABILITY**

Protecting the environment through rubber recycling is one of our key focus areas. Over the past 27 years, Terrain® has used over 150,000 tons of recycled rubber to create high quality flooring for sports arenas, playgrounds, gyms and more.

- ✔ We contribute to waste reduction and sustainability by using rubber which would otherwise go to landfills and dumps
- ✔ We source material from reputed European suppliers who are also committed to a green future.
- ✔ We are constantly innovating and developing new techniques which help lower our carbon footprint.

OUR **VISION**

Be the world's resilient flooring expert for well-being and performance.

OUR **MISSION**

Make products that match international standards, offer them at fair price and delight with sharp delivery.

- Certified in engineering and design of products, processes, and systems.
- Fair price is a selling price that considers quality, performance, supply conditions, time of delivery and payment options. It is calculated at the level that is fair for both sides. The seller gains some margin, which is not excessively high.
- Ensuring Customer Success through a proactive and holistic approach.
- Sharp on Time, Sharp in finish

TURNKEY SOLUTIONS BY **TERRAIN®**



Our experts will analyse the area and recommend the appropriate flooring for your needs.



All Terrain® products are manufactured at our state-of-the-art facility in UAE, ensuring on time delivery.



Our team will show schematics of our new facility before work starts so that you know what the output will be.



We will be in constant communication with your project management team to ensure there are no surprises.



Terrain flooring experts will take care of the installation. No fuss, no headaches. *Available only in UAE.*




We will be happy to help your maintenance team take proper care of your new flooring.




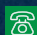


TERRAPLAY[®]

Play Solutions by **TERRAIN**[®]

 inquiry@terrainfloorings.com

 terrainfloorings.com

 +971 55 325 2253

 Al Khaleej Polymers Rubber & Plastic Industries LLC
Plot No. L7 & 28, Al Ghail Industrial Park,
Ras al Khaimah, **UAE**



FOLLOW US ON

