

A person is leading a horse through a stable aisle. The floor is made of a dark, perforated metal grating. The person and horse are silhouetted against a bright light coming from a large open doorway at the end of the aisle. Outside the doorway, trees and a building are visible. A diagonal green line runs from the top right towards the bottom left, passing through the scene.

TERRAIN®
RESILIENT IN EVERY SENSE

ANIMAL & AGRI

WORLD-CLASS PERFORMANCE AND DURABILITY

FLOORING SOLUTIONS
WORLD-CLASS PERFORMANCE
AND DURABILITY



TERRAIN® | ANIMAL & AGRI

Perfect for equine, dairy, and agricultural farms, the Terrain® Animal & Agri farm flooring range is a perfect blend of durability, usability and comfort. They are made using high-quality materials to handle regular wear and tear while being easy to use and clean.

OUR COMMITMENT TO **SUSTAINABILITY**

Protecting the environment through rubber recycling is one of our key focus areas. Over the past 27 years, Terrain® has used over 150,000 tons of recycled rubber to create high quality flooring for sports arenas, playgrounds, gyms and more.

- /// We contribute to waste reduction and sustainability by using rubber which would otherwise go to landfills and dumps
- /// We source material from reputed European suppliers who are also committed to a green future
- /// We are constantly innovating and developing new techniques which help lower our carbon footprint

CERTIFICATIONS

FIRE RETARDANT
certified by **intertek**



ANTI FUNGAL
certified by **intertek**



ANTI UV
certified by **intertek**



certified by



IMPACT ATTENUATING PLAYGROUND
SURFACING & SAFETY OF TOYS
certified by



SLIP RESISTANCE
certified by



1,200,000 SQ M/YR
RECYCLED TILES PRODUCED



150 PEOPLE
SKILLED WORKFORCE



17 ECO TILES
WIDE PRODUCT RANGE



6,000,000 KG/YR
RUBBER GRANULES RECYCLED



200,000 TIRES
RECYCLED EVERY YEAR



10 TO 70 MM
FLEXIBILITY IN THICKNESS



24,000 SQ M
LARGE FACTORY AREA

TURNKEY SOLUTIONS BY **TERRAIN®**



Product Specifications

Our experts will analyse the area and recommend the appropriate flooring for your needs.



Manufacturing & Delivery

All Terrain products are manufactured at our state-of-the-art facility in UAE, ensuring timely delivery.



Design

Our team will show schematics of our new facility before work starts so that you know what the output will be.



Project Management

We will be in constant communication with your project management team to ensure there are no surprises.



Installation

Terrain flooring experts will take care of the installation. No fuss, no headaches.

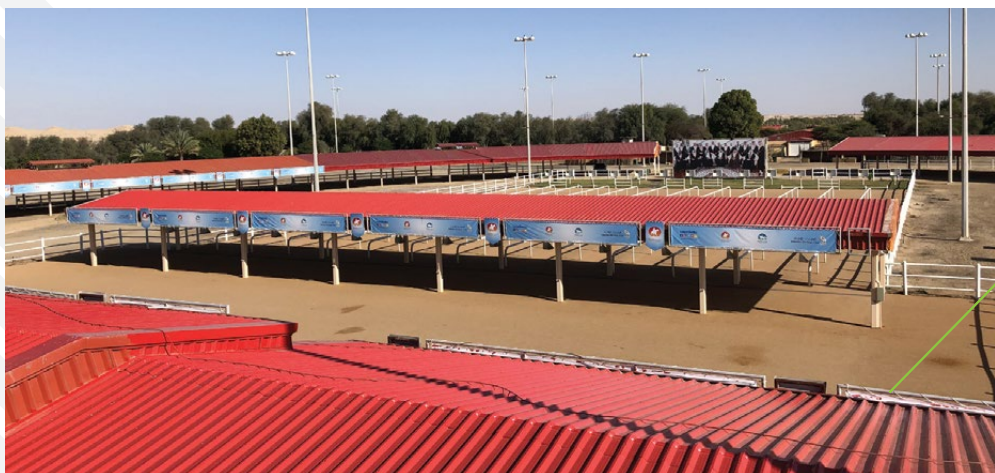


Support & Maintenance

We will be happy to help your maintenance team take proper care of your new flooring.

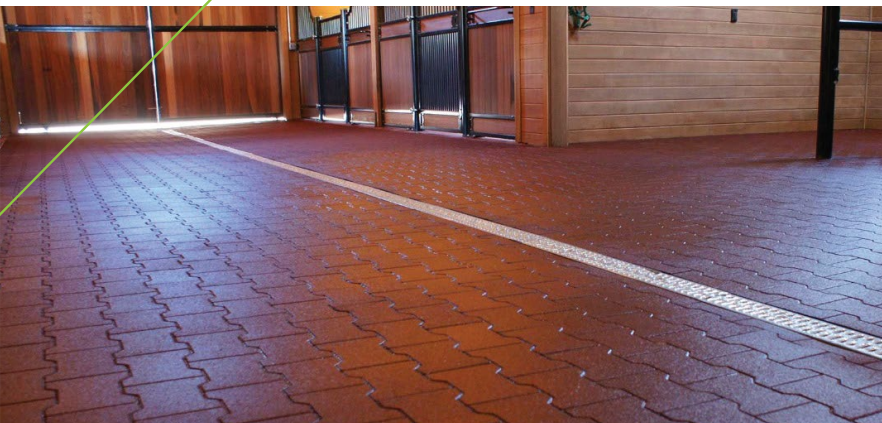


TERRAIN® | ANIMAL & AGRI APPLICATIONS





Terrain Flooring
supports its customers
all over GCC countries and
other parts of the world which
makes Terrain floorings the
best animal flooring solution
provider.



PRODUCTS

MATTING FOR HORSE STABLES



TERRAIN® | VULCAN EQUINE MAT > BUBBLE TOP

Designed specifically for horse stables, these mats are non-slippery, anti-fatigue, provide thermal insulation, durable, low maintenance and easy to clean.



TERRAIN® | VULCAN EQUINE MAT > HAMMER TOP

Designed specifically for horse stables. These mats are non-slippery, anti-fatigue, provide thermal insulation, durable, low maintenance, easy to clean and denser, as well as stronger & long-lasting.



WALKWAYS FLOORING FOR ANIMALS



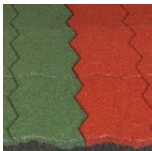
TERRAIN® | ECO PAVERS > HEXAGON

We offer a wide range of pavers for your gardens, walkways and equine floorings. These are denser than regular tiles and are also smaller in size, hence easy to carry and install.



TERRAIN® | ECO PAVERS > DOG BONE

We offer a wide range of pavers for your gardens, walkways and equine floorings. These are denser than regular tiles and are also smaller in size, hence easy to carry and install.



TERRAIN® | ECO PAVERS > Z-SHAPE

We offer a wide range of pavers for your gardens, walkways and equine floorings. These are denser than regular tiles and are also smaller in size, hence easy to carry and install.



SEAMLESS FLOORING POLYURETHANE SYSTEM

Outdoor highly resilient animal and agri flooring system ideal for equine, dairy and agricultural farms. Combination of a mixture of PU binder plus SBR granules in granulometry of 0.5mm-2mm, applied by hand in thickness of 15mm or more. Available in various dimensions and colors as per client requirement.



TERRAIN® | VULCAN

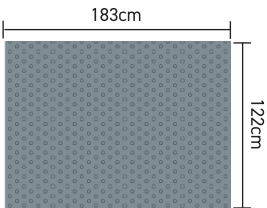
EQUINE MAT > BUBBLE TOP

PRODUCT DESCRIPTION



Designed specifically for horse stables, these mats are non-slippery, anti-fatigue, provide thermal insulation, durable, low maintenance and easy to clean.



Dimensions



Available weight & thickness

	29 kg 14mm
	41 kg 17mm
(± 2mm)	

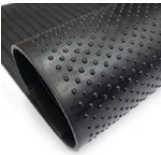
COLORS



INDUSTRY APPLICATIONS

- Equine Farms
- Dairy Farms
- Horse Race Courses

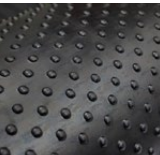
ROLLED UP



REVERSE



CLOSE UP



TERRAIN® | VULCAN

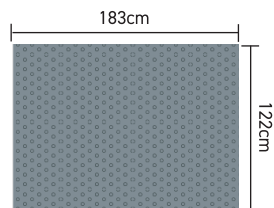
EQUINE MAT > HAMMER TOP

PRODUCT DESCRIPTION

Designed specifically for horse stables. These mats are non-slippery, anti-fatigue, provide thermal insulation, durable, low maintenance, easy to clean and denser, as well as stronger & long-lasting.



Dimensions



Available weight & thickness

	32 kg 10mm
	42 kg 15mm
	48 kg 17mm (± 2mm)

COLORS



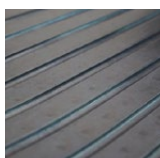
INDUSTRY APPLICATIONS

- Equine Farms
- Dairy Farms
- Horse Race Courses

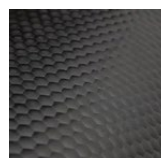
ROLLED UP



REVERSE



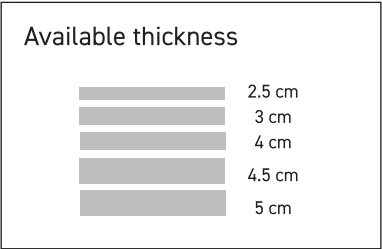
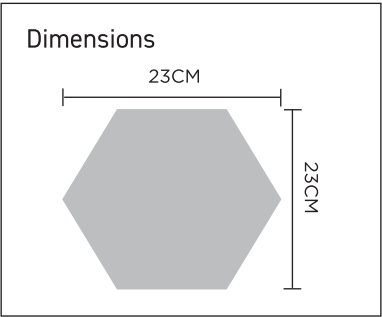
CLOSE UP



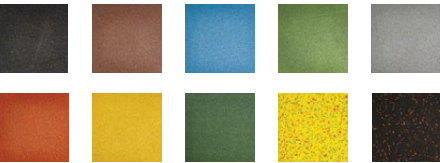
TERRAIN® | ECO PAVERS > HEXAGON

PRODUCT DESCRIPTION

Our hexagon pavers are best suited for gardens and walkways. They are an ideal alternative to a concrete pathways.



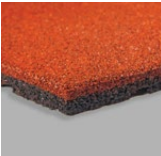
COLORS



INDUSTRY APPLICATIONS

- Horse Stable

EDGE



REVERSE



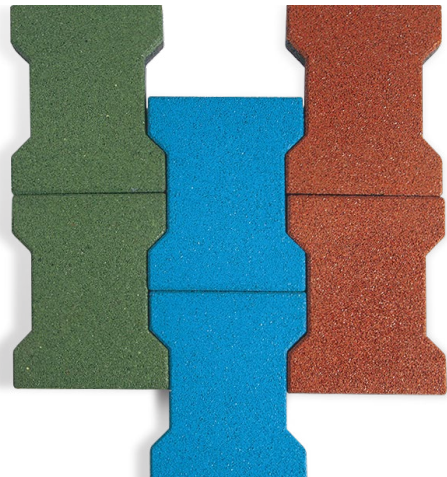
SIDE



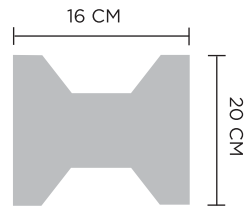
TERRAIN® | ECO PAVERS > DOG BONE

PRODUCT DESCRIPTION

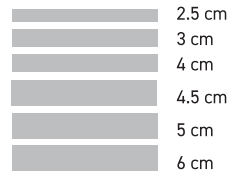
We offer a wide range of pavers for your gardens, walkways and equine floorings. These are denser than regular tiles and are also smaller in size, hence easy to carry and install.



Dimensions



Available thickness



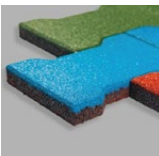
COLORS



INDUSTRY APPLICATIONS

- Horse Stable

EDGE



REVERSE



CORNER



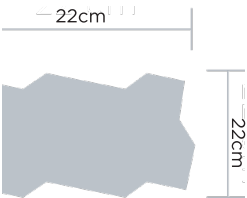
TERRAIN® | ECO PAVERS > Z-SHAPE

PRODUCT DESCRIPTION





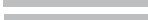

We offer a wide range of pavers for your gardens, walkways and equine floorings. These are denser than regular tiles and are also smaller in size, hence easy to carry and install.



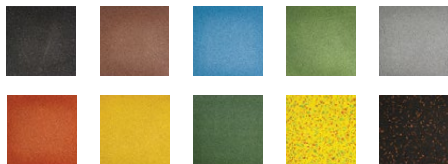
Dimensions



Available thickness

	2.5 cm
	3 cm
	3.5 cm
	4 cm
	4.5 cm
	5 cm

COLORS



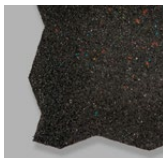
INDUSTRY APPLICATIONS

- Horse Stable

EDGE



REVERSE



SIDE



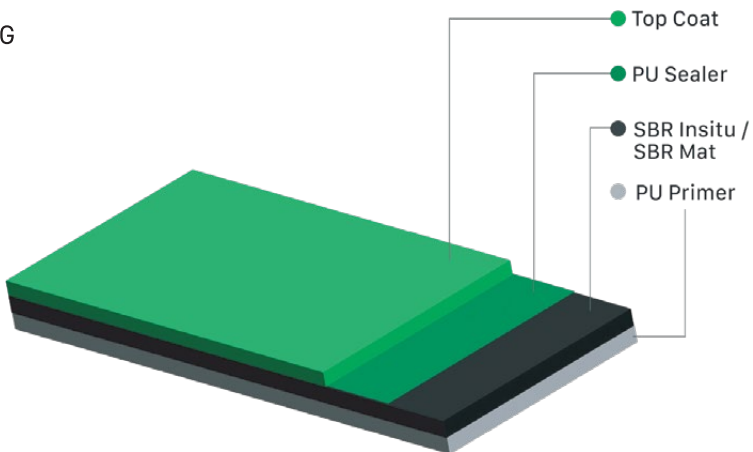
TERRAIN® | SEAMLESS POLYURETHANE

PRODUCT DESCRIPTION

Outdoor highly resilient animal and agri flooring system ideal for equine, dairy and agricultural farms. Combination of a mixture of PU binder plus SBR granules in granulometry of 0.5mm-2mm, applied by hand in thickness of 15mm or more. Available in various dimensions and colors as per client requirement.



LAYERING



DIMENSION & COLOR

Available in various dimensions and colors as per client requirement.

INDUSTRY APPLICATIONS

- Horse Stable
- Animal Farm



TERRAIN®

RESILIENT IN EVERY SENSE



terrainfloorings.com



+971 4 263 2332



inquiry@terrainfloorings.com



Urban Terrain Sport Equipments LLC

Office No. 605, Block A,
Abraj-Hor Al Anz East,
Dubai, UAE

Follow us on

